



FIN-Window Nova-line N 90+8  
aluminium-uPVC

## The Leibniz 47 town house in Magdeburg

Windows and window walls as a contrast to the style of the late 19th century.

Among the noble façades of houses from the Historicist era, one building in particular stands out: exclusive, urban and modern are all terms being used to describe this multi-family house in the centre of Magdeburg. With its clear lines and angular forms, the Leibniz 47 town house is an inspiring presence, modest enough to blend in harmoniously, yet still able to contrast with the historic buildings that surround it.

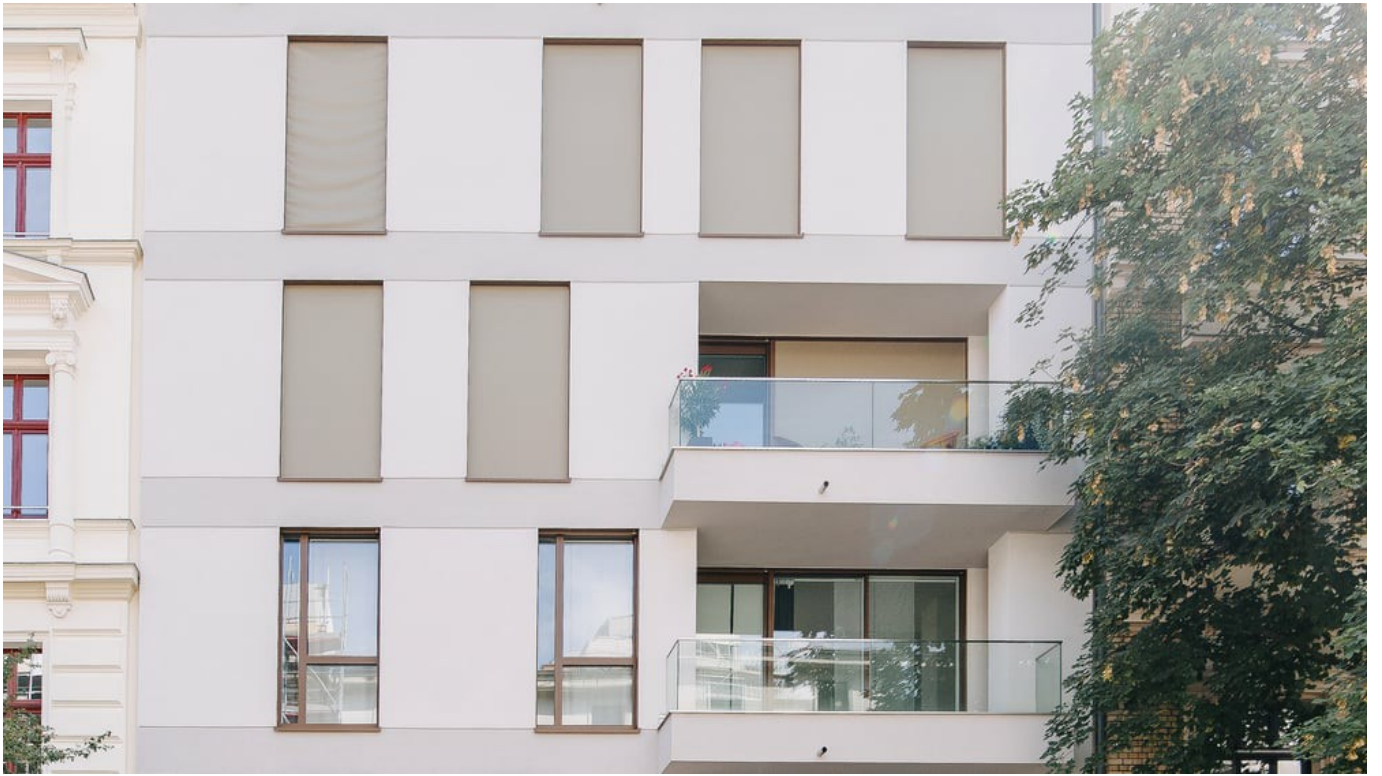
It contains four apartments on five floors, including a penthouse that extends over the upper two floors. The expressive architecture is complemented by a tastefully matching interior. And the Finstral windows and window walls perfectly round off the aesthetics of the fittings: the FIN-Window Nova-line windows, the aluminium-uPVC window walls with their striking Step-line sash and a glass entry door all fit wonderfully into the overall picture, both inside and out – and join it all together.

<b>Type of building</b>	Multiple-family dwelling
<b>Construction</b>	2017
<b>Project Planning</b>	New build/conversion MCM Vermögenswerte AG & Co. KG
<b>Country</b>	Germany
<b>City</b>	Magdeburg

**Schöfisch**  
Kreuzweg 12b  
15326 Podelzig  
Germany  
+491717742862  
[reinhard-schoefisch@t-online.de](mailto:reinhard-schoefisch@t-online.de)

### The Leibniz 47 town house in Magdeburg

Windows and window walls as a contrast to the style of the late 19th century.  
[www.finstral.com/en/references/the-leibniz-47-town-house-in-magdeburg/311-3935.html](http://www.finstral.com/en/references/the-leibniz-47-town-house-in-magdeburg/311-3935.html)



**The Leibniz 47 town house in Magdeburg**

Windows and window walls as a contrast to the style of the late 19th century.  
[www.finstral.com/en/references/the-leibniz-47-town-house-in-magdeburg/311-3935.html](http://www.finstral.com/en/references/the-leibniz-47-town-house-in-magdeburg/311-3935.html)



**The Leibniz 47 town house in Magdeburg**

Windows and window walls as a contrast to the style of the late 19th century.  
[www.finstral.com/en/references/the-leibniz-47-town-house-in-magdeburg/311-3935.html](http://www.finstral.com/en/references/the-leibniz-47-town-house-in-magdeburg/311-3935.html)



**The Leibniz 47 town house in Magdeburg**

Windows and window walls as a contrast to the style of the late 19th century.  
[www.finstral.com/en/references/the-leibniz-47-town-house-in-magdeburg/311-3935.html](http://www.finstral.com/en/references/the-leibniz-47-town-house-in-magdeburg/311-3935.html)



**The Leibniz 47 town house in Magdeburg**

Windows and window walls as a contrast to the style of the late 19th century.  
[www.finstral.com/en/references/the-leibniz-47-town-house-in-magdeburg/311-3935.html](http://www.finstral.com/en/references/the-leibniz-47-town-house-in-magdeburg/311-3935.html)

# Products used

$U_w$  - Heat transmittance coefficient of window element

$R_w$  - Sound insulation properties of a window

**npd** - No performance determined



## FIN-Window Nova-line N 90+8

*aluminium-uPVC*

$U_w$  1-sash 2-/3-glazing:

1,1 / 0,76 W/m<sup>2</sup>K

$U_w$  2-sash 2-/3-glazing:

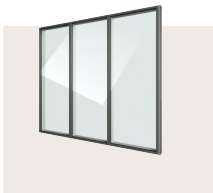
1,2 / 0,85 W/m<sup>2</sup>K

$R_w$  Standard:

36 (-2;-5) db

$R_w$  Best value:

45 (-1;-3) db



## FIN-Vista

*aluminium-uPVC*

Modular mullion-transom system for window walls. Can be combined with all windows, sliding and folding doors.

$U_w$  1-sash 2-/3-glazing:

1,3 / 0,84 W/m<sup>2</sup>K

$R_w$  Standard:

34 (-2;-6) db

$R_w$  Best value:

45 (-2;-6) db

Product data sheets and more information at  
[www.finstral.com/range](http://www.finstral.com/range)