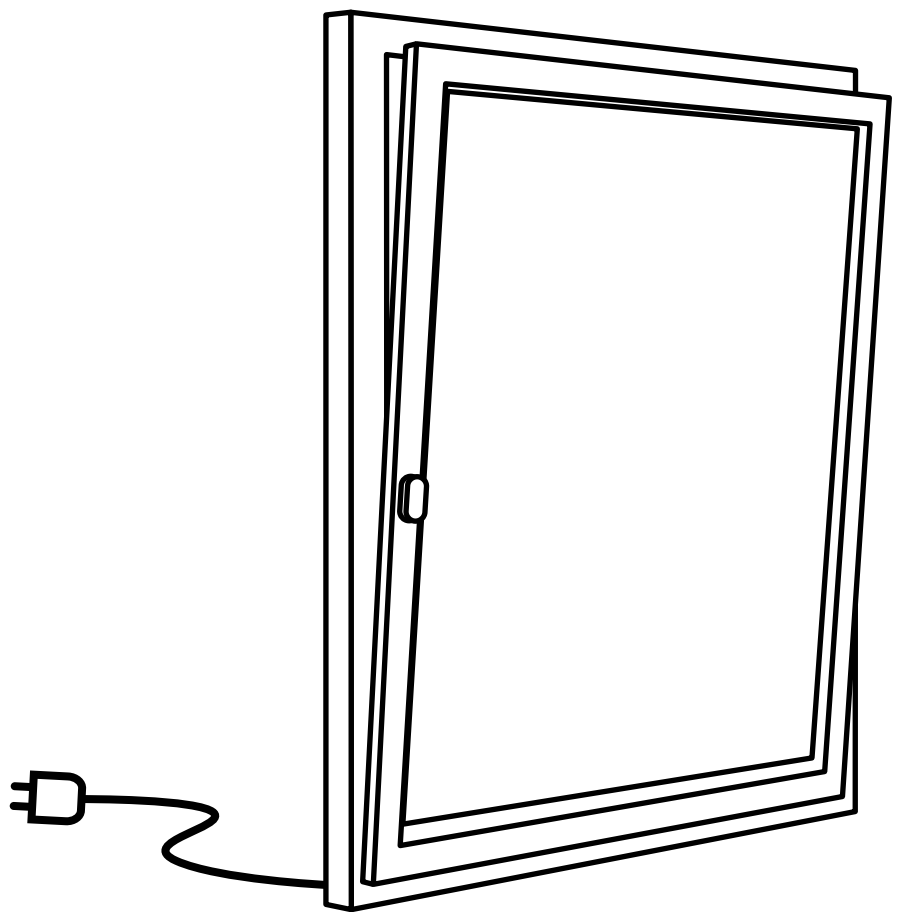


# Operating and safety instructions.

## Motorised tilt-and-turn fittings.

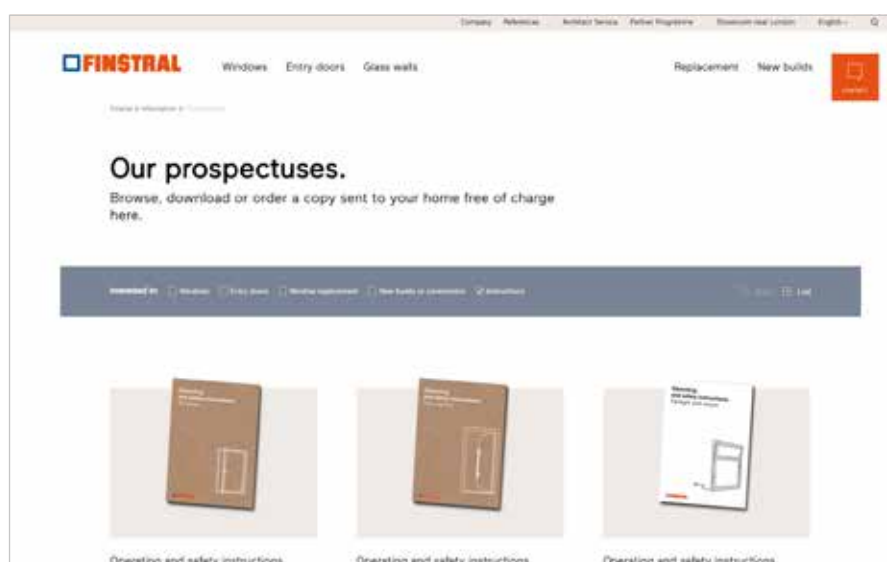




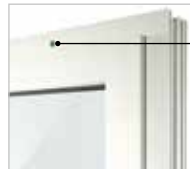
# Contents

<b>Component description</b>	4
<b>Start-up</b>	
Safety instructions	5
Reference and teach-in operation	5
<b>Wall switch</b>	
Operation	9
Reference operation after power failure	9
Manual emergency operation	10
<b>Cleaning and maintenance</b>	11
<b>Identifying and rectifying problems</b>	12

For further information on the operation and care of our Finstral products, please refer to the instructions in our document “Operating and safety instructions. Windows.” You can find it at: [finstral.com/manuals](http://finstral.com/manuals)



# Component description



Control LED



Blind rosette with cover

# Safety instructions

- If the window closure is motor-driven, do not push it by hand. If the window tilting or opening is motor-driven, do not pull the element by hand. This could damage the chain drive.
- Keep the lever in a safe place. This is a requirement in case of a manual emergency operation.



## Safety and cleaning instructions

Further safety instructions and general information on window cleaning can be found in the instructions for window use ("Operating and safety instructions. Windows.") at: [finstral.com/manuals](https://finstral.com/manuals)

# Start-up

## → Safety instructions

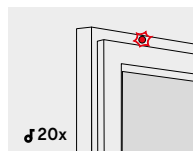
- When the safety stop is deactivated, the moving element does not react to obstacles. This allows the element to squeeze or crush body parts.
- Keep the moving element in sight during commissioning. Keep a safe distance for yourself and anybody else away from the moving element.

## → Reference operation and teach-in

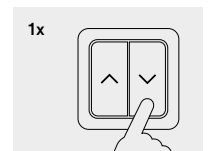
### Save the opening width

Here, you can find out how to save the opening width.

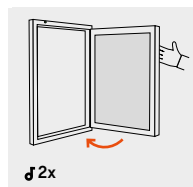
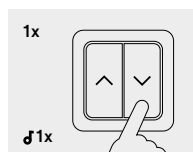
1. Close and lock the window. Then, switch on the power. The drive flashes red and beeps 20 times.



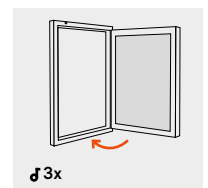
2. Press the "Close" key 1 time. The LED will briefly flash green. The drive references itself, unlocks, and opens the window automatically to teach in the opening width (teach-in operation).



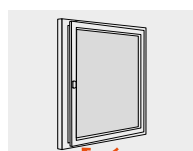
3. To save the opening width, end the teach-in operation as follows: Press the "Close" key 1 time. The drive beeps 1 time. The drive beeps twice when counter-pressure is applied, either by predetermined scissor extension or by manual force.



4. After 10 minutes, the window closes and locks independently. The green LED lights up briefly. The window is then in the closed position.



5. The drive closes the window automatically and locks it. The opening width is saved.



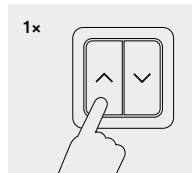
# Wall switch → Operation

## Window in tilt position

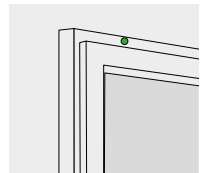
This is how you bring the window into the tilt position via the wall switch.

### Opening via the key

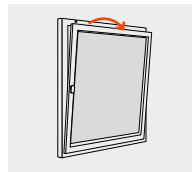
1. Press the "Open" key once.



2. The LED lights up green.

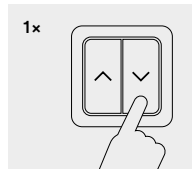


3. The window tilts independently in several seconds. As soon as the window is fully tilted, the green LED goes off.

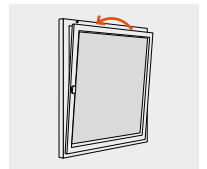


### Closing via the key

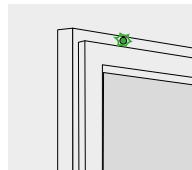
1. Press the "Close" key once.



2. The window closes independently over several seconds.



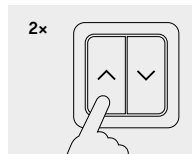
3. When the window is completely closed, the green LED flashes briefly.



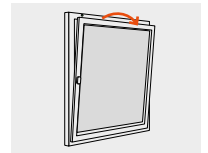
### Window in 10-minute tilt position

With the 10-minute tilt position, the window tilts independently and closes after 10 minutes. This setting is useful if you want to ventilate the room via a tilted window for 10 minutes.

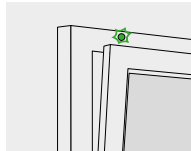
1. Press the "Open" key twice.



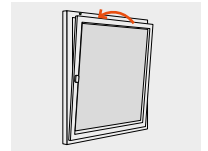
2. The window closes and locks independently for several seconds. The LED lights up red.



3. The window is in the tilt position for 10 minutes. The LED flashes green.



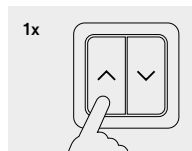
4. After 10 minutes, the window closes and locks independently. The green LED lights up briefly. The window is then in the closed position.



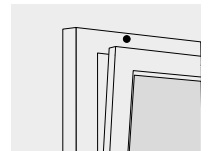
### Window in gap the ventilation position

This method can be used to stop the window during the tilting process. A gap ventilation position is created.

1. Press the "Open" button once during the movement (during opening or closing).



2. The window stops during the opening or closing process.

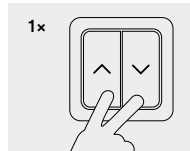


# Wall switch → Operation

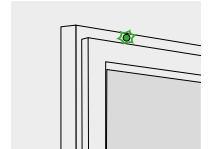
## Window in the open position

Here, you can find out how to move the window to the open position via the wall switch.

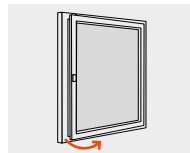
1. Press the “Open” and “Close” keys once simultaneously.



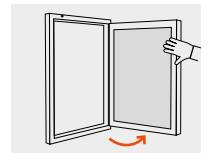
2. The window unlocks independently, the green LED flashes for several seconds.



3. As soon as the window is completely unlocked, the element will beep twice.



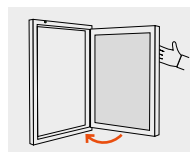
4. You can open the window manually.



## Closing window in the opening position with the auto lock function

Push the window manually in the open position until you hear a beep. As soon as the window is tilted or pushed shut, the tilt-and-turn fittings engage and lock the window independently. If the window is not pressed properly or is blocked or the window tilts back, the drive tries to lock up to 4 times. However, if the window is shut but has not been locked correctly, the locking mechanism will retract without further attempts. In this case, first open or tilt the window completely. The motor-driven locking mechanism then becomes active again. The auto lock function is inactive in the event of a power failure.

Press the window. The LED briefly lights up red. The window locks automatically.



## Safety function

If the maximum permissible force of 150N is exceeded when closing the window (e.g. due to wind load), the drive returns to its starting position. After 60 seconds, the drive attempts to close the window again. The LED flashes red/green. After the second failed attempt, the window remains open and the LED flashes red. Check the window for any obstructions and remove them. Then press the “Close” button again.

# → Reference operation after power failure

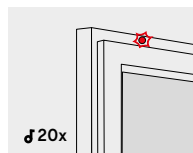
## Safety instructions

A reference operation must be carried out after a power failure. The following safety instructions must be observed:

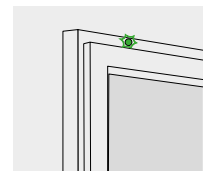
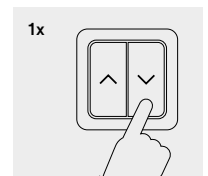
- If the maximum permissible force of 150N is exceeded when closing the window (due to wind load), the drive returns to its starting position.
- After 60 seconds, the drive attempts to close the window again, and the LED flashes red-green. After the second failed attempt, the window remains open and the LED flashes red.
- If necessary, check your windows for any obstructions and remove them. Press the "Close" button again

## Procedure

1. Switch on the power. The LED flashes red and the drive beeps 20 times.



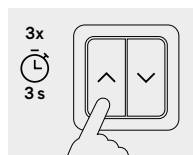
2. Press the "Close" key once. The LED then flashes briefly. The drive references itself automatically.



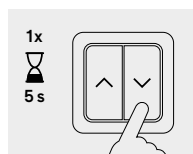
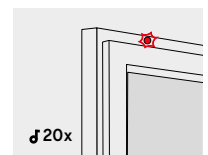
## Relearning the opening width

Here, you can find out how to relearn the opening width.

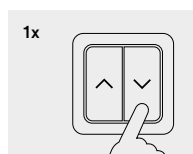
1. Switch on the power. The LED flashes red and the drive beeps 20 times.



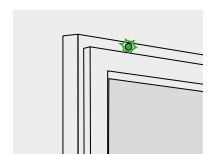
2. The LED flashes red and beeps 20 times.



3. Then press the "Close" button once.



4. The drive automatically performs the reference operation.



# Wall switch

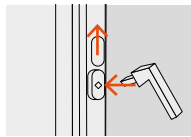
## → Manual emergency operation

### Manual emergency operation

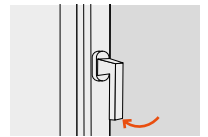
With manual operation, the open commands via motor-driven components are inactive.

#### With the window closed and locked

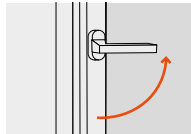
1. Insert the lever fully into the rosette. It must be at approx. 45°.



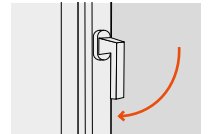
2. Turn the lever to the locking position. It must be placed vertically downwards. This is the only way to decouple the drive from the fittings.



3. Turn the lever 90° in the opening direction.



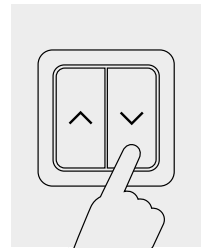
4. Close the window. Turn the lever fully into the locking position.



#### After manual operation

After manual operation, pull off the lever and slide the cover over the blind rosette. As soon as the window is closed and locked, press the "Close" key. This engages the drive and all functions are available again.

If the drive is not engaged, it is not possible to operate the drive. In this case, the drive moves up for three seconds after pressing the "Open" key and then returns to the starting position.



# Cleaning and maintenance

## **Only by a specialist**

The motorised tilt-and-turn fittings should be cleaned and maintained at least once a year by a specialist. The element can be cleaned with a dry microfibre cloth, taking all necessary precautions (see instructions for use and safety instructions for windows). Do not allow any liquid to get inside the device.

# Identifying and rectifying problems

Problem	Cause	Solution
<b>The tilt-and-turn motor cannot be opened manually.</b>	The decoupling does not work.	Perform the manual emergency operation, see page 10.
<b>The tilt-and-turn motor cannot be opened.</b>		
<b>The auto lock function does not work. / The window does not move to the opening position.</b>	The magnets are in the wrong position or the DIP switch setting is incorrect.	Couple the tilt-and-turn motor. / Contact the technical service of the installation company.
<b>The tilt-and-turn motor does not move to the "Open" / "Close" position.</b>	No power supply	Contact the technical service of the installation company.
	The fittings are blocked or too stiff.	
	The fittings are too smooth-running.	
	The drive is dirty.	Check the drive for dirt and clean it if necessary.
	Especially when moving to the "Open" position: The drive is already in the "Open" position.	Check the position of the window sash and perform a reference run if necessary.
	Especially when moving to the "Close" position: The drive is already in the "Close" position.	

<b>Problem</b>	<b>Cause</b>	<b>Solution</b>
<b>The tilt-and-turn motor beeps several times and stops. The LED flashes red continuously.</b>	High wind pressure	Wait until the wind pressure decreases.
	Draught	Eliminate the reason for the draught.
	The fittings are blocked or too stiff.	Check the windows for manual function and remove the blockage if necessary.
	Power failure	Fix the voltage failure and perform a reference run.
<b>The tilt-and-turn component beeps several times and tries to move slowly up to 3 times in the “Close” position (after the 3rd attempt, the drive stops). The LED flashes red continuously.</b>	High wind pressure	Wait until the wind pressure decreases.
	Draught	Eliminate the reason for the draught.
	The fittings are blocked or too stiff.	Check the windows for manual function and remove the blockage if necessary.
<b>The LED flashes green after tilting via the motor.</b>	The 10-minute tilt position is activated.	After 10 minutes, the window closes independently. If you want to close it earlier, cancel the 10-minute tilt position by closing the window manually or via the “Close” key.

**Copyright**

© Finstral AG, Unterinn/Ritten, 2025  
All rights reserved.

The Finstral logo is a registered image mark of Finstral AG.  
The name "Finstral" is a registered word mark of Finstral AG.

**Edition May 2025**

Item number 60-0310-00-07

Subject to technical changes. Colour may differ from original products owing to printing processes. The presentation and description of the products in the prospectuses are for indicative purposes only. Should the product delivered deviate in any way from the product appearing in the advertising material, this shall not constitute any defect or deviation as only the order may be used as a benchmark.



# Experience windows anew. Visit us at the Finstral Studio.

**Talk directly to a specialist consultant:**

Visit partner: [finstral.com/dealer-search](https://finstral.com/dealer-search)

Chat online: [finstral.com](https://finstral.com)

Your nearest Finstral partner:

**Finstral Studio Unterinn**

Headquarters, 600 m<sup>2</sup> exhibition area

Unterinn/Ritten, Italy

T +39 0471 296611

[finstral.com/unterinn](https://finstral.com/unterinn)

**Finstral Studio Borehamwood**

Showroom, 210 m<sup>2</sup> exhibition area

Premiere House, Elstree Way

T +44 (0)20 80500584

Borehamwood, Hertfordshire, WD6 1JH

[finstral.com/borehamwood](https://finstral.com/borehamwood)