



FIN-Window Nova-line N 90+8  
aluminium-PVC

## New-build scheme in northern Spain

Generous glazing affords impressive views of Gijón.

This certified passive house in Spain's Asturias region was completed in 2023. The expansive glass surfaces of the almost exclusively floor-to-ceiling window units form an integral part of the rectilinear architecture in its green setting. Here, as always, Finstral has achieved an uncompromising marriage of functionality and aesthetics: after all, nothing could blend more harmoniously with the solid concrete fabric of this single-family house than the large glass areas of the FIN-Slide lift-and-slide door.

Designed and manufactured in-house, this ingenious window construction provides for extra-large, though effortlessly opening and closing sashes plus a barrier-free, though perfectly insulated transition between indoors and outdoors. The slender design of the selected Slim-line and Nova-line frame shapes – white uPVC with an embossed, imitation-wood finish on the interior and aluminium in the colour Sablé Anthracite on the exterior – vouches for additional daylighting and a minimalist, contemporary look.

Type of building	Single-family dwelling
Construction	2022-2023
Project Planning	Window replacement <i>Estudio Arquitectura -9</i>
Country	Spain
Region	Asturias
City	Gijón
Photographer	<i>Marcos Vega</i>



**Bella Finestra**  
Avd. de la Costa, 124 Bajo  
33203 Gijón - Asturias  
Spain  
985167316  
[gestion@bellafinestra.es](mailto:gestion@bellafinestra.es)  
[www.bellafinestra.es](http://www.bellafinestra.es)





**New-build scheme in northern Spain**

Generous glazing affords impressive views of Gijón.

[www.finstral.com/en/references/new-build-scheme-in-northern-spain/311-12028.html](http://www.finstral.com/en/references/new-build-scheme-in-northern-spain/311-12028.html)



**New-build scheme in northern Spain**

Generous glazing affords impressive views of Gijón.

[www.finstral.com/en/references/new-build-scheme-in-northern-spain/311-12028.html](http://www.finstral.com/en/references/new-build-scheme-in-northern-spain/311-12028.html)

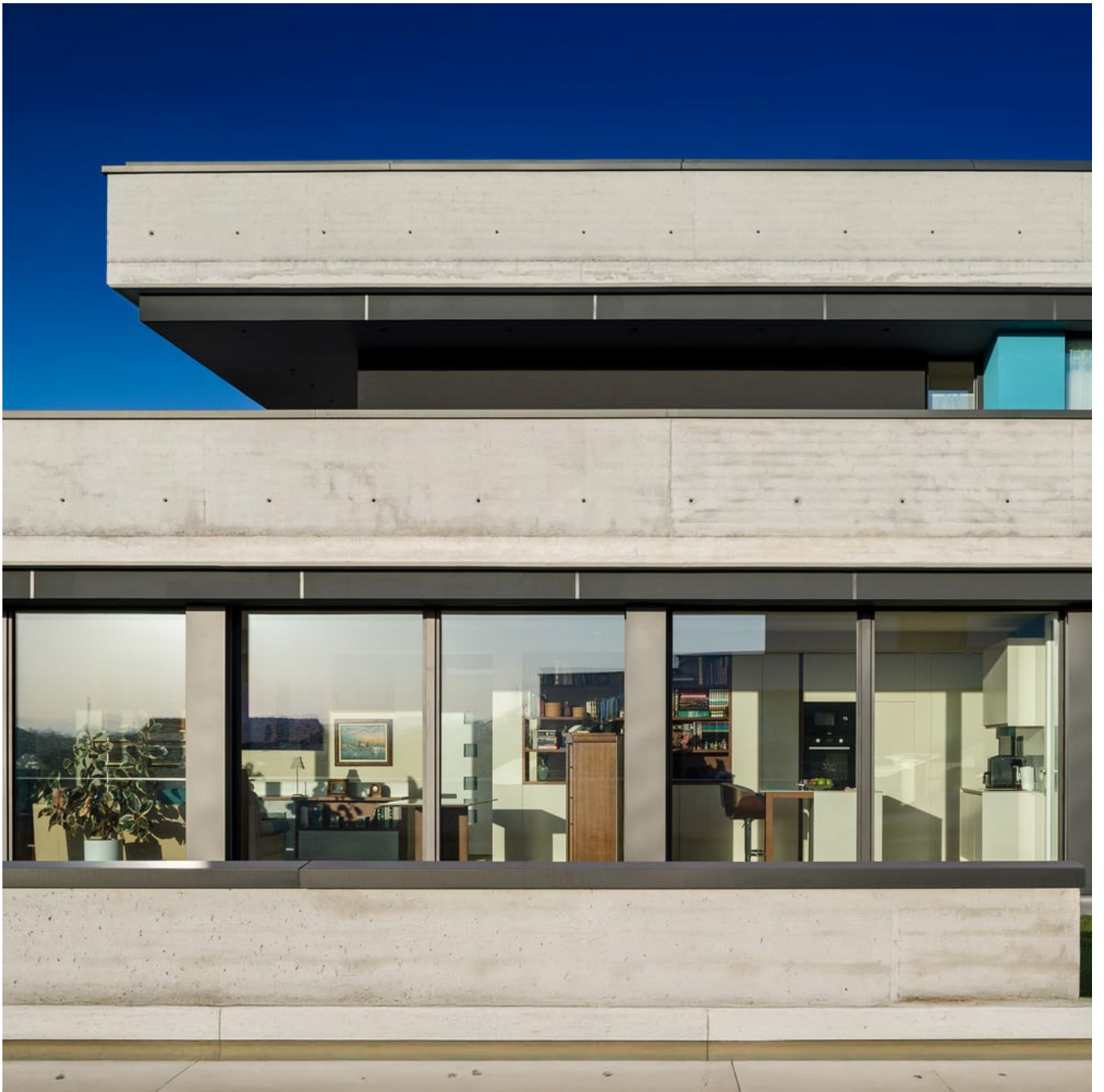


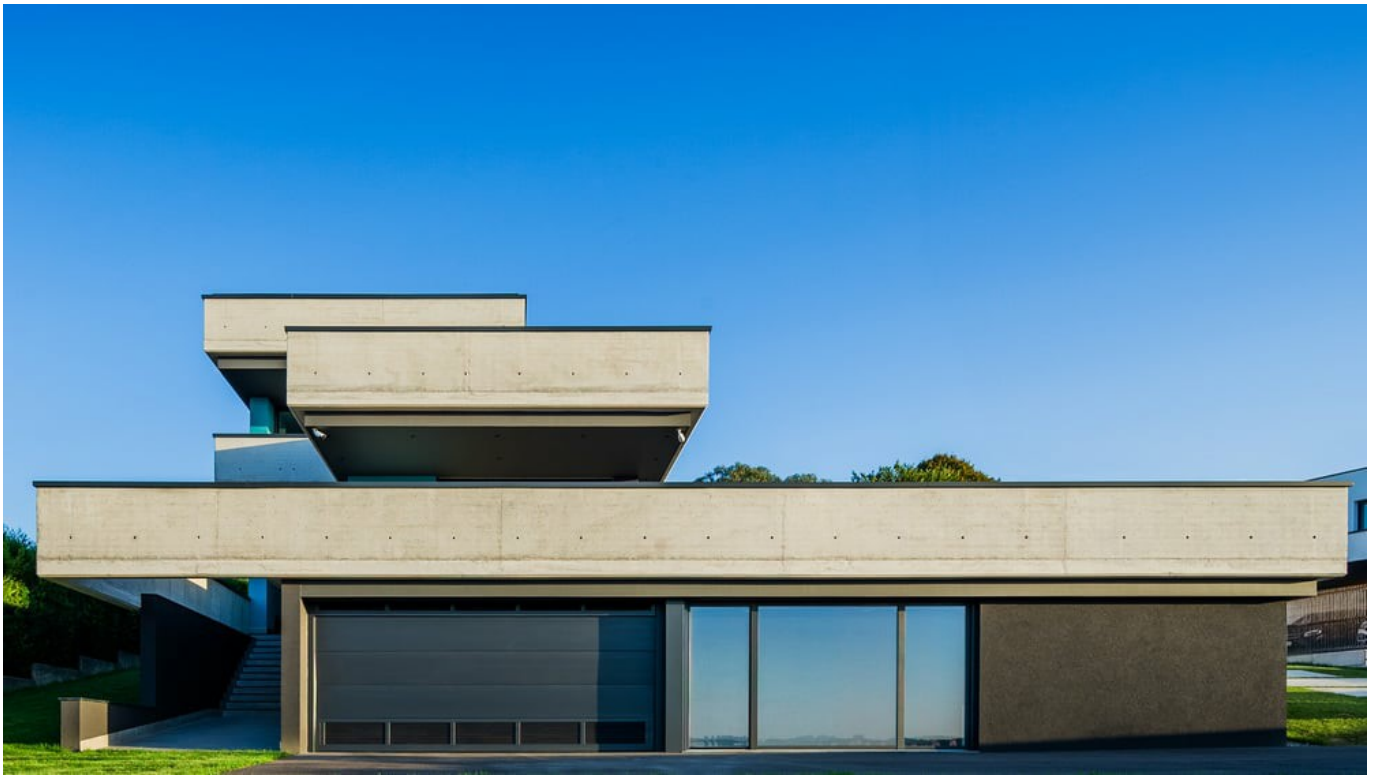


**New-build scheme in northern Spain**

Generous glazing affords impressive views of Gijón.

[www.finstral.com/en/references/new-build-scheme-in-northern-spain/311-12028.html](http://www.finstral.com/en/references/new-build-scheme-in-northern-spain/311-12028.html)





# Products used

$U_w$  - Heat transmittance coefficient of window element

$R_w$  - Sound insulation properties of a window

**npd** - No performance determined



## FIN-Window Nova-line N 90+8

*aluminium-PVC*

$U_w$  1-sash 2-/3-glazing:

1,1 / 0,76 W/m<sup>2</sup>K

$U_w$  2-sash 2-/3-glazing:

1,2 / 0,85 W/m<sup>2</sup>K

$R_w$  Standard:

36 (-2;-5) db

$R_w$  Best value:

45 (-1;-3) db



## FIN-Slide Slim-line 169

*Aluminium-PVC*

$U_w$  1-sash 2-/3-glazing:

- / 0,91 W/m<sup>2</sup>K

$U_w$  2-sash 2-/3-glazing:

- / 0,82 W/m<sup>2</sup>K

$R_w$  Standard:

npd

$R_w$  Best value:

npd

Product data sheets and more information at  
[www.finstral.com/range](http://www.finstral.com/range)