

FIN-Window Nova-line N 90+8  
*aluminium-uPVC*

## Spaten building in Munich

Total refurbishment instead of demolition.

In 1969, the Spaten brewery commissioned a six-storey administrative building on Munich's Marsstraße, to which another two storeys were added at a later date. The decision to completely modernise the building was taken in 2022: total refurbishment instead of demolition. As a result, not only was the streetscape and urban architecture preserved, this option also made much more sense in economic and ecological terms.

Finstral windows and their installation played a key role in the scheme: the company's slide-in installation method guaranteed a quick, straightforward, clean – i.e. minimally invasive – replacement. On the exterior, the Nova-line sashes ensured there was no loss of window area. At the same time, the energy-efficient windows created a high-comfort indoor environment with optimum insulation and soundproofing. This has appreciably raised the quality of the office space and made the commercial building an attractive workplace.

---

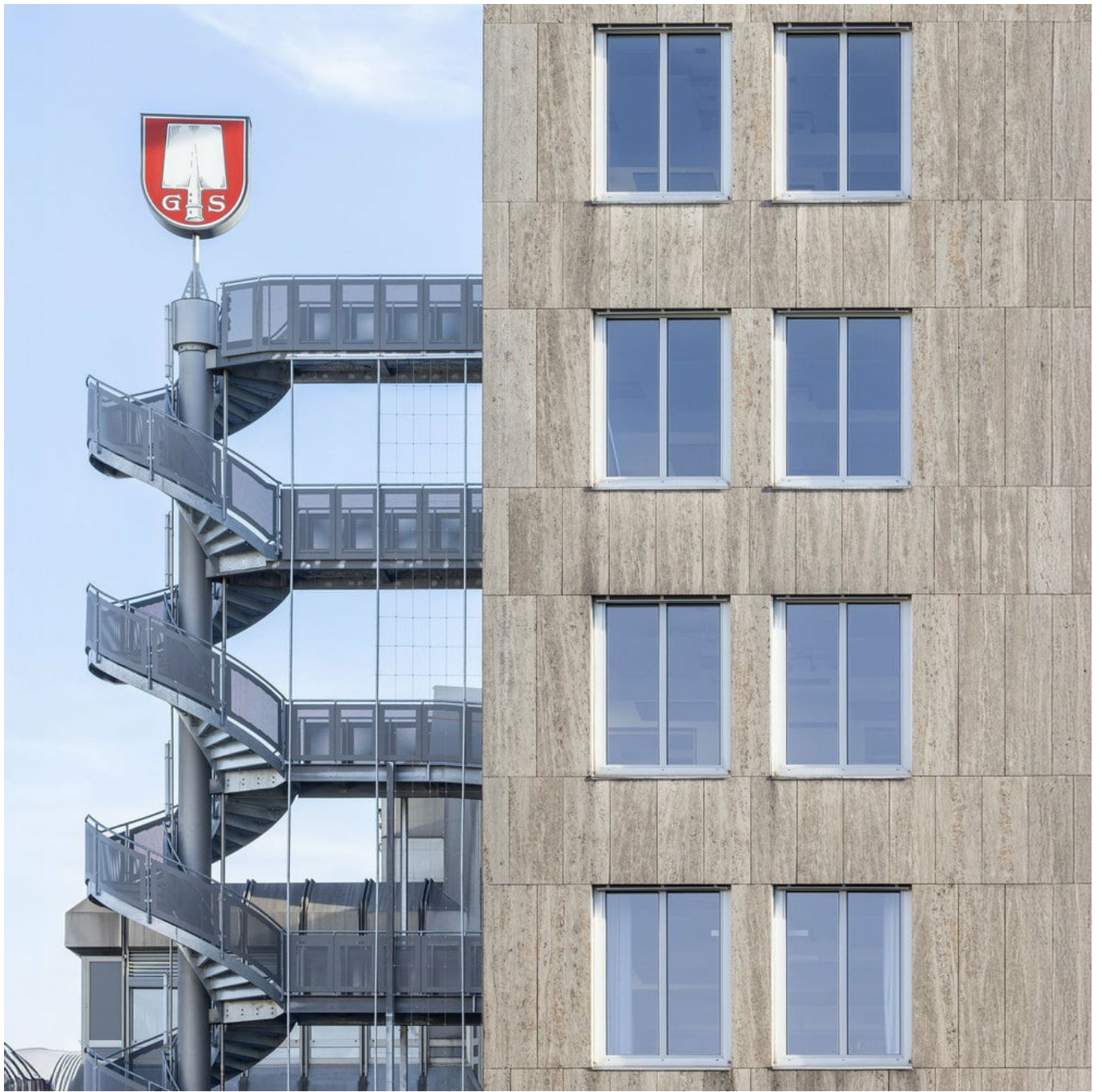
<b>Type of building</b>	Commercial
<b>Construction</b>	2023
<b>Project</b>	Window replacement
<b>Planning</b>	<b>Engineering practice</b> Jürgen Konrad
<b>Country</b>	Germany
<b>Region</b>	Bavaria
<b>City</b>	Munich
<b>Photographer</b>	<b>Meraner &amp; Hauser</b>

### Spaten building in Munich

Total refurbishment instead of demolition.

[www.finstral.com/en/references/spaten-building-in-munich/311-12143.html](http://www.finstral.com/en/references/spaten-building-in-munich/311-12143.html)







**Spaten building in Munich**

Total refurbishment instead of demolition.

[www.finstral.com/en/references/spaten-building-in-munich/311-12143.html](http://www.finstral.com/en/references/spaten-building-in-munich/311-12143.html)











# Products used

$U_w$  - Heat transmittance coefficient of window element

$R_w$  - Sound insulation properties of a window

**npd** - No performance determined



FIN-Window Nova-line N 90+8

*aluminium-uPVC*

$U_w$  1-sash 2-/3-glazing:

1,1 / 0,76 W/m<sup>2</sup>K

$U_w$  2-sash 2-/3-glazing:

1,2 / 0,85 W/m<sup>2</sup>K

$R_w$  Standard:

36 (-2;-5) db

$R_w$  Best value:

45 (-1;-3) db

Product data sheets and more information at  
[www.finstral.com/range](http://www.finstral.com/range)